

Eco-Discipleship?

How we're framing it

- Eco - (*Greek*) *oik/oiko/oikos* & (*Late Latin*) *oeco* = house or home
- Discipleship - The lifelong process of following Jesus, becoming Jesus and doing what Jesus did (Swanson).
- Eco-Discipleship = Discipling & faith formation experiences rooted in our earthly home (God's Earth)
 - Eco-Orthodoxy
 - Eco-Blueprint
 - Eco-Theology
 - Eco-Orthopraxy
 - Eco-Stewardship
 - Eco-Disciplines

Eco-Blueprint

A glowing blue sphere composed of a network of white lines and dots, representing a complex system or blueprint, held in a person's hand. The sphere is the central focus, with a hand visible at the bottom, palm up, as if presenting or supporting it. The background is a dark blue gradient with some light bokeh effects.

God's Ecological Pattern for all of Life

A Natural Blueprint from our Creator

Rich heritage of indigenous wisdom traditions

Older language of Medicine Wheel

Wilderness Awareness School - Elders in First Nation, Australian, European

- Eight Shields Model - incorporates intercardinal directions as well
- Anake Outdoor School ('10) - integrated into 9-month immersion experience
- Coyote's Guide to Connecting with Nature (published in 2009)
- Survivor & Dadirri Camps at Camp Mack & Brethren Heights

Eco-Wheel represents what??



East

Diurnal Cycle: *Dawn/Sunrise*

Time of Day: *Morning*

Season: *Spring*

Plant Life Cycle: *Sprouting*

Human Life Cycle: *Birth*

Element: *Water*



South

Diurnal Cycle: *Zenith*

Time of Day: *Mid-Day (Noon)*

Season: *Summer*

Plant Life Cycle: *Flowering*

Human Life Cycle: *Adolescence*

Element: *Earth*



West

Diurnal Cycle: *Sunset*

Time of Day: *Evening*

Season: *Autumn*

Plant Life Cycle: *Bearing
fruit/food*

Human Life Cycle: *Adulthood*

Element: *Fire*



North

Diurnal Cycle: *Hidden*

Time of Day: *Midnight*

Season: *Winter*

Plant Life Cycle: *Seeds
germinating*

Human Life Cycle: *Elderhood*

Element: *Air/Wind/Breath*

East Quality: *Inspiration*



Embodied: *Creativity,
Excitement, Beginnings, Renewal*

Indicator of Awareness:
Common Sense (All Senses)

Shema: *Heart*

Christ: *Inspires & Amazes*

Spiritual Formation: *Missional,
Hospitality, Welcome/Inclusion*

Shadow Form: *Agitation*

South Quality: *Formation*



Embodied: *Focus, Study, Working/Laboring*

Indicator of Awareness: *Inquisitive Focus*

Shema: *Mind*

Christ: *Instructs*

Spiritual Formation: *Biblical, Theological Study*

Shadow Form: *Demolition*

West Quality *Celebration*



Embodied: *Gathering, Sharing,
Appreciation, Harvesting*

Indicator of Awareness:
Service to Community

Shema: *Strength*

Christ: *Involves*

Spiritual Formation: *Worship*

Shadow Form: *Lamentation*

North Quality: *Integration*



Embodied: *Wisdom, Distillation*

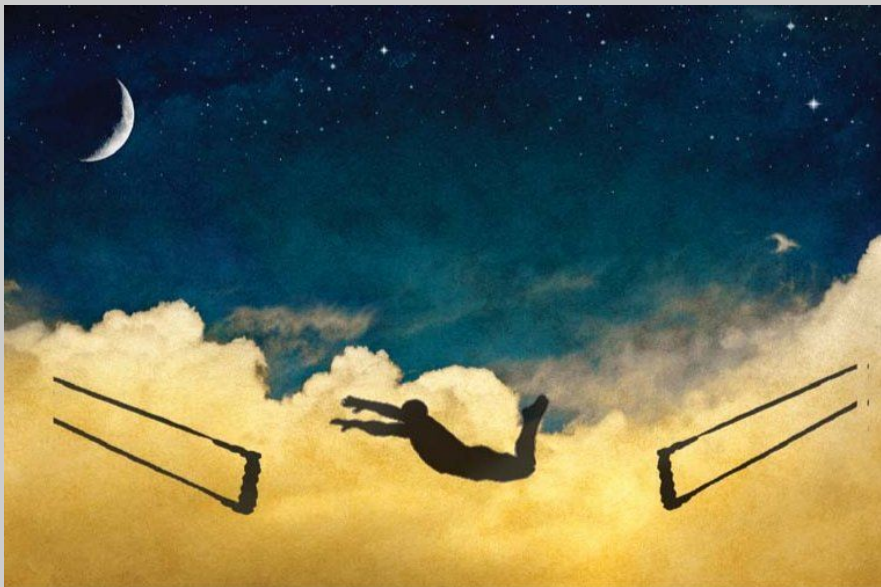
Indicator of Awareness:
Self-Sufficiency & Confidence

Shema: *Soul*

Christ: *Infuses Spirit*

Spiritual Formation: *Spiritual
Direction/Discernment, Prayer*

Shadow Form: *Stagnation*



Thresholds

Southeast: *Growing Pains*

Southwest: *Identity*

Northwest: *Grief*

Northeast: *Legacy (End/Begin)*

Inspiration. Formation. Celebration. Integration.

Application in Ministry
Settings

How would you preach/teach?

How would you plan worship?

How would you plan a retreat?

How would you do pastoral care?

How would you run a day of camp?

*How would you fuse it in your
prayer life?*

Resources:

Coyote's Guide to Connecting with Nature by Young, Haas, McGown

Celtic Wheel of the Year by Tess Ward

The Four Shields by Steven Foster & Meredith Little

A Wild Faith: Jewish Ways into Wilderness by Rabbi Mike Comins

Water, Wind, Earth, & Fire: The Christian Practice of Praying with the Elements by Christine Valters Painter

Wilderness Awareness School (wildernessawareness.org)